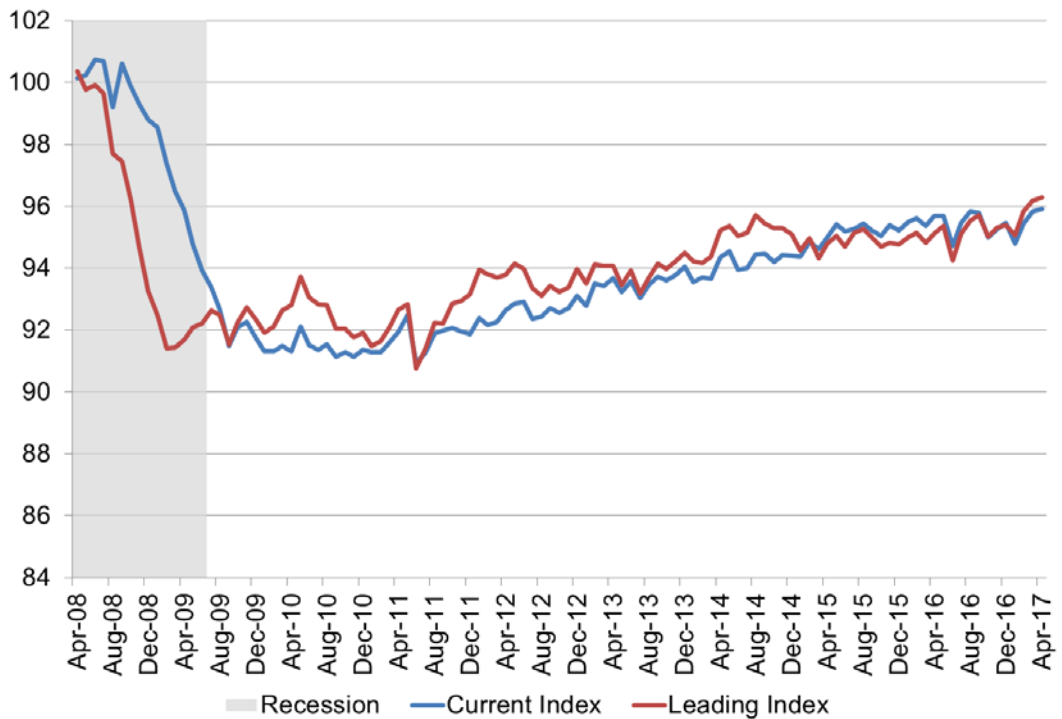


WSU Wichita Metropolitan Area Indices

June 2017

The Center for Economic Development and Business Research has compiled the current and leading indices to provide insights into the present and future state of the Wichita economy. The WSU Current Conditions Index is designed to give an indication of the present conditions of the Wichita metropolitan area economy. The WSU Leading Economic Indicators Index is designed to give an indication of where the Wichita economy is headed over the next six months.

WSU Indices of Economic Activity



WSU Current Index of Economic Activity

The current index continued to improve slightly, after declining somewhat at the end of the year. The current level of economic activity, in Wichita, is slightly above the 2016 level. The improvement can be attributed to an increase in total non-farm employment. That improvement was somewhat offset by small deteriorations in the unemployment rate and the hours and earnings of production workers.

WSU Wichita Current Conditions Index

	Apr-17	Mar-17	Monthly % Change	Annual % Change
Current Conditions Index	95.9	95.8	▲ 0.1%	▲ 0.2%
Index Components - Wichita MSA				
Total Non-farm Employment	298,800	298,100	▲ 0.2%	▲ 0.3%
Unemployment Rate	4.3%	4.1%	▲ 0.2%	▼ -0.3%
Hours of Production Employees*	43.3	43.4	▼ -0.2%	▼ -1.4%
Earnings of Production Employees*	\$749.17	\$757.18	▼ -1.1%	▼ -2.5%

Source: Bureau of Labor Statistics, data compiled by CEDBR and seasonally adjusted

*Manufacturing Weekly Average

WSU Leading Index of Economic Activity

The leading index continues to indicate an increase in economic activity into the fall, from current levels, after showing decreases through the end of the year. This would put the level of economic activity above 2016 levels through the end of 2017. This can mostly be attributed to improvements in the National Industrial Production Index and stability in the International Leading Index.

WSU Wichita Leading Conditions Index

	Apr-17	Mar-17	Monthly % Change	Annual % Change
Leading Conditions Index	96.3	96.2	▲ 0.1%	▲ 1.2%
Predicted change*	▲ 0.39	▲ 0.37	-	-
Index Components				
Aircraft Production Index	101.8	102.6	▼ -0.8%	▼ -4.9%
Kansas Leading Index	2.7	3.1	▼ -0.4%	▲ 2.2%
National Industrial Production Index	105.1	104.1	▲ 1.0%	▲ 2.1%
International Leading Index	100.1	100.1	▬ 0.0%	▲ 0.5%

Source: Board of Governors of the Federal Reserve System, Federal Reserve Bank of Philadelphia, Organization for Economic Co-Operation and Development (OECD), data compiled by CEDBR

*Predicted change in the level of economic activity over the next six months from the current level of economic activity

Data can be accessed directly at www.kansaseconomy.org/local-indices